

ISRAEL JOURNAL OF
ENTOMOLOGY

Vol. 33, 1999
ISSN 0075-1243

A Note from the Editor	ii
Dedication	iii
Annotated list of aphids (Aphidoidea) in Israel	<i>E. Swirski and S. Amitai</i> 1
Notes for Authors	121

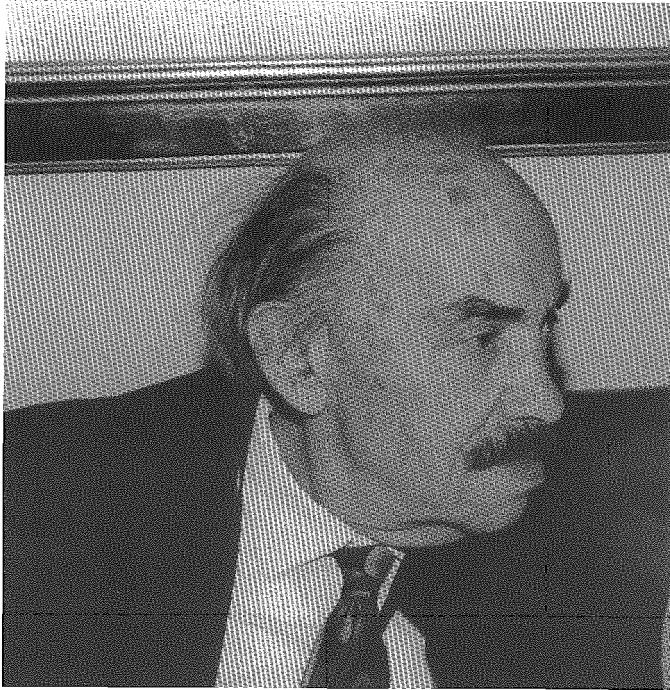
Cover: Horn-like galls of *Baizongia pistaciae* (Linnaeus, 1767) (Aphididae: Aphidinae: Fordini: Baizongiina) on apical leaves of *Pistacia palaestina* (Anacardiaceae). Photo: A. Shoob.

Abstracted/Indexed in: *Review of Agricultural Entomology, Review of Medical and Veterinary Entomology, and Entomology Abstracts.*

A NOTE FROM THE EDITOR

We are happy to present you with volume 33 of the *Israel Journal of Entomology*. As a new editor, one of my goals is to improve the quality of the journal and its status within the scientific community. Volume 33 is the first volume to be published by Laser Pages Publishing Ltd. Having a reputable publisher will undoubtedly contribute to the improvement, stability, and recognition of the *Israel Journal of Entomology*. The process of finding a new publisher and establishing ways of working together took longer than I expected. I regret the delay in publishing this volume and hope that we will catch up within the next two years. I am looking forward to fruitful collaboration with Laser Pages, the Society's members, and fellow entomologists.

Ilan Yarom
Editor-in-Chief



Prof. Eliahu Swirski

One of the leading entomologists in Israel and one of the founders of the Entomological Society of Israel.

The Entomological Society of Israel congratulates Prof. Eliahu Swirski on his 80th birthday. We wish him many more years of good health and scientific contributions.

NOTES FOR AUTHORS

Israel Journal of Entomology publishes original contributions in all areas of entomology. Authors are entirely responsible for statements, whether of fact or opinion. Manuscripts, in standard English only, are considered on the understanding that they have not been submitted elsewhere. If a preliminary paper relating to the contents of the paper has already been published, this must be stated.

All papers are subject to peer review. Authors may suggest competent referees for consideration by the editorial board. Referees will remain anonymous unless they expressly request to be identified.

FORM OF MANUSCRIPT

Papers should be concisely written. Consulting the latest issue of this journal and *Scientific style and format—The CBE manual for authors, editors, and publishers*, 6th ed. (Cambridge University Press, Cambridge) is highly recommended. Manuscripts should be submitted in triplicate, typed double spaced on one side of a page only, leaving 3 cm margins on both sides, together with a 3.5" diskette containing the text, tables, and figures. Manuscripts should be submitted as MSWord documents only, and the program used to prepare the figures should be indicated.

Pages should be numbered consecutively, including title page. Body of text, references, footnotes, tables, and figure legends should each start on a new page. Words which are to be italicized in print, such as genus and species names, should be italicized in the manuscript or underlined with a single line. No more than three categories of subheadings are allowed; their hierarchy should be clearly indicated.

The title of the paper should be informative, but preferably not exceed 20 words. Page 1 of the manuscript should contain the article title, authors' full names, complete affiliations, current addresses, a short running title (abbreviated form of the title) of less than 55 characters, and the name, mailing address, telephone, fax, and e-mail contacts of the author to whom correspondence should be sent. Page 2 should contain an abstract (not exceeding 250 words) that is a brief but informative summary of the contents and the conclusions of the paper. The abstract should be intelligible to a nonspecialist in the field and should avoid specialized terms and abbreviations or symbols that require definition. It should not contain references. Keywords (5–7) should be provided.

SPELLING

Spelling and terminology should be consistent throughout. Taxonomic names, on first mention, should be followed by the name of the first describer, written in full. When referring to paired organs in morphological descriptions, the singular form should be used. Locality records should preferably be followed by coordinates. Names of localities in Israel will be given as they are transliterated in the "Israel Touring Map" (1:250,000) and "List of Settlements," published by the Survey of Israel, Ministry of Labour. Regions in Israel and nearby areas should follow the *Fauna Palaestina* map (as in Theodor, O. 1975. *Fauna Palaestina, Insecta I: Diptera Pupipara*. The Israel Academy of Sciences and Humanities, Jerusalem.)

TABLES

Number tables consecutively with Arabic numerals in order of appearance in the text. Present each table on a separate page with a short descriptive caption directly above the table and any footnotes (indicated by superscript lower case italic letters) directly below the table. Typesetters rely on the visual clues you provide. Please be sure that the appearance of your tables, as submitted, properly indicates the relationships between headings, subheadings, and data.

FIGURES

Number all figures with Arabic numerals in order of appearance in the text. Type all legends double-spaced consecutively on a separate sheet. Identify all figures on the back in pencil with author name and figure number; indicate the top of the figure. Plan figures to fit the proportions of the printed page (17.5 × 22.5 cm). Figures should be in a form suitable for reproduction. Submissions should include at least one set of figures that are originals, not photocopies. Lettering should be of professional quality or generated by high-resolution computer graphics and should be large enough (10–12 points) to take a reduction of 50 to 60%. If figures are computer-generated, submit them on a disk, in a non-proprietary format (pict, tiff, eps, jpeg), as well as in hard copy. Freehand, penciled, or typewritten lettering is not acceptable.

All drawings should be submitted as glossy prints or good quality copies. Symbols used to identify points within a graph should be large enough that they will be easily distinguishable after reduction. Include written permission from the publisher to reproduce any previously published tables or figures.

PHOTOGRAPHS

Submit photographs as unmounted high-contrast glossy prints. Include only those parts of the photograph that are necessary to illustrate the matter under discussion; cut off unessential areas. Figures that are to appear together as one plate should have comparable contrast and density and should be mounted as close together as possible. Do not combine line drawings and halftones into composite plates; instead, submit unmounted original art and a layout sheet.

COLOR ILLUSTRATIONS

Illustrations in color can be accepted only if the authors defray the cost. Authors should consult with the Editor-in-Chief regarding the expected cost of color plates.

REFERENCES

References within the text should indicate names of the authors and year of publication for one or two authors. Use letters to distinguish among citations with the same year. Use "et al." for more than two authors (but in the Reference section list all authors). Multiple references in the text should be arranged chronologically; those of the same year alphabetically. Example: (Jones and Cohen, 1987; Cohen and Jones, 1988a,b; Levy et al., 1989; Xavier, 1989; Brown, in press). Unpublished references are to be cited as author, followed by either (personal communication), (unpublished), or (in press). Only the latter category will appear in the list of references, together with the name of the journal (or publisher, if a book) that accepted it for publication. For "personal communications" the author is responsible for obtaining permission for such citation from the person cited.

In the reference sections do *not* abbreviate journal titles. Examples of references:

- Bergman, E.D. 1976. The future of insecticides—a problem of human environment. *Israel Journal of Entomology* 11:5–14.
- Brown, P.A., Blackman, R.L. 1994. Morphometric variation in the *Geoica utricularia* (Homoptera: Aphididae) species group on *Pistacia* (Anacardiaceae), with descriptions of new species and a key to emigrant *alatae*. *Systematic Entomology* 19: 119–132.
- Kupfermann, I., Teyke, T., Rosen, S.C., Weiss, K.R. 1991. Studies of behavioral state in *Aplysia*. *Biology Bulletin* 180: 262–268.
- Taylor, L.R., Palmer, J.M.P. 1970. Aerial sampling. In: Aphid technology. van Emden, H.F., ed. Academic Press, London, pp. 125–138.

TAXONOMY

Comprehensive treatments of taxa (genera, families, etc.) will receive higher priority over partial treatments. Partial lists of species or faunistic lists, not accompanied by proper keys or references to such keys, will receive lower priority. Keys should be dichotomic, with two alternatives for each character, and preferably illustrated.

Authors must comply with the requirements of the most recent edition of the *International Code of Zoological Nomenclature* of the International Commission on Zoological Nomenclature, London and with the published Opinions of the International Commission. The following abbreviations should be adopted: n. gen. — new genus; n. sp. — new species; n. comb. — new combination of names; n. syn. — denotes synonymy established for the first time; n. stat. — will be used to indicate a new change in rank of a name; nomen nudum, nomen dubium, and nomen novum are not abbreviated.

In treating the taxonomy of a described taxon, the following form is essential for the beginning of a chapter.

Filippia oleae (Costa, 1832)
(Fig. 1)

Coccus oleae Costa, 1882:21.

Lecanium oleae Smith, 1892:15 (list); Brown, 1899:20 (redescription).

Filippia oleae Fernald, 1903:13 (catalog); Hail, 1943:50 (hosts list).

The full references to the above citations should be given in the **References** section.

New taxa must be distinguished from related taxa. In describing new species, the complete data of

the type-series, together with the collection(s) in which it is deposited will be recorded in the original description as illustrated below:

MATERIAL EXAMINED. Holotype ♀, ISRAEL: Jerusalem, 14.v.1956, on *Ficus carica*, F. Levi (BMNH). Paratypes, 20 ♀, same data as holotype, (USNM); 8 ♂ Tel Aviv, 3.v. 1962, *Acacia* sp., G. Broan (ZTV).

Authors are required to deposit all type-material in nationally or internationally recognized institutions, not private collections.

Records of specimens other than type series will be listed at the end of each relevant chapter in a similar manner.

PROOFS AND REPRINTS

Proofs will be sent to the corresponding author. Authors will be charged for substantial alterations of the original composition. Thirty reprints will be provided free of charge to the corresponding author. Additional reprints, as well as copies of the journal at reduced price, may be ordered using the form included with the proofs. At this time, also request return of original figures, if desired. Manuscripts and original materials will be retained by the publisher for 6 months only.

EXPERIMENTS ON LIVING ANIMALS

The Editorial Board reserves the right not to consider papers in which the study caused unnecessary pain, discomfort, or disturbance of normal health on living animals. Reports of experiments on vertebrates must state that the *Principles of laboratory animal care* (NIH publication No. 86-23, revised 1985) or *UFAW handbook on the care and management of laboratory animals* (Longman Scientific & Technical, Bath, U.K.) were followed, as well as specific national laws (e.g., the current version of the Israeli Law on the Protection of Animals) where applicable.

CORRESPONDENCE

Manuscripts submitted for publication should be addressed to the Editor-in-Chief.

SUBSCRIPTIONS

Correspondence for subscriptions should be addressed to: Laser Pages Publishing Ltd., P.O. Box 35409, 91352 Jerusalem, Israel. e-mail: laserpages@bezeqint.net.

Science *from the* Middle East

Israel Journal of Earth Science ISSN 0021-2164

Israel Journal of Entomology ISSN 0075-1243

Israel Journal of Plant Science ISSN 0792-9978

Israel Journal of Zoology ISSN 0021-2210

*Focusing on the unique environment of the Eastern Mediterranean—
land bridge between three continents—*

Israel is a meeting point between three continents, two seas, and several climatic regions. The central part is a transition area where peripheral populations from the north, south, and east meet. Five different ecological bridges—the sea, the air, the coastal plain, and the mountain ridge, as well as the Arava and Jordan Valleys—cross this meeting point from north to south, creating Israel's unique biogeographical position and its unparalleled biodiversity. — from a recent abstract

PEER-REVIEWED ACADEMIC JOURNALS IN ENGLISH

All subscriptions now include both print and internet versions

CONTACT US TODAY FOR FULL SUBSCRIPTION DETAILS
and to request sample copies



LASER PAGES PUBLISHING LTD.

P.O. Box 35409, Jerusalem 91352, Israel • Fax: + 972 2 652 2277, Tel: + 972 2 652 2226

E-mail: laserpages@bezeqint.net

Israel Journal of Chemistry

ISSN 0021-2148

Editor-in-chief: **Haim Levanon**, The Hebrew University of Jerusalem

PUBLISHED QUARTERLY

Each issue of the *Israel Journal of Chemistry*—on a single topic of current interest—consists of invited papers by top chemists from around the world.

BACK ISSUES AVAILABLE—write for a complete list.



LASER PAGES PUBLISHING LTD. P.O. Box 35409, Jerusalem 91352, Israel

Tel: + 972 2 652 2226, Fax: + 972 2 652 2277, E-mail: laserpages@bezeqint.net

