

SHORT COMMUNICATION

Redescription of the lost and found male holotype of *Ummidia gandjinoi* (Andreeva, 1968) (Araneae: Ctenizidae)

SERGEI L. ZONSTEIN

Steinhardt Museum of Natural History, Tel Aviv University, Tel Aviv, 69978 Israel.

Email: znn@post.tau.ac.il

The poorly known Central Asian trap-door spider *Ummidia gandjinoi* was described by Andreeva (1968) from a single male as a representative of *Pachylomerus* Ausserer, 1871 (preoccupied in Coleoptera). Brignoli (1983) transferred this species to *Ummidia* Thorell, 1875, and Zonstein (2008) described the conspecific females. Although the male holotype had been described fairly adequately to distinguish *U. gandjinoi* from its closest congeners, its depository for a long time was considered unknown, and the specimen was assumed to be lost. However, the holotype has been quite unexpectedly detected by Dr W. Wawer, the curator of the spider collection deposited at the Museum and Institute of Zoology, Warsaw, Poland (MIZW), who sorted and prepared the loan requested for a revision of the cyrtaucheniid *Anemesia* Pocock, 1895. It was found among the vials with the paratypes of *Brachythele karatauvi* Andreeva, 1968, and with some other representatives of *Anemesia*. The redescription of the borrowed and examined holotype of *U. gandjinoi* is provided below.

Photographs were taken using a Zeiss Discovery V20 stereomicroscope with a Canon PowerShot G9 camera, and prepared using the Helicon Focus 6.3.2 Pro (www.heliconsoft.com). All measurements are taken in millimetres. Abbreviations: a–apical, ALE–anterior lateral eyes, AME–anterior median eyes, d–dorsal, p–prolateral, PLE–posterior lateral eyes, PLS–posterior lateral spinnerets, PME–posterior median eyes, PMS–posterior median spinnerets, pv–proventral, r–retrolateral, rv–retroventral, v–ventral.

I thank Dr Wioletta Wawer (MIZW) for providing me with material on loan, and Drs Dmitry Logunov (Manchester Univ., UK) and Kadir Boğac Kunt (Ankara, Turkey) for their comments on an earlier draft of this note.

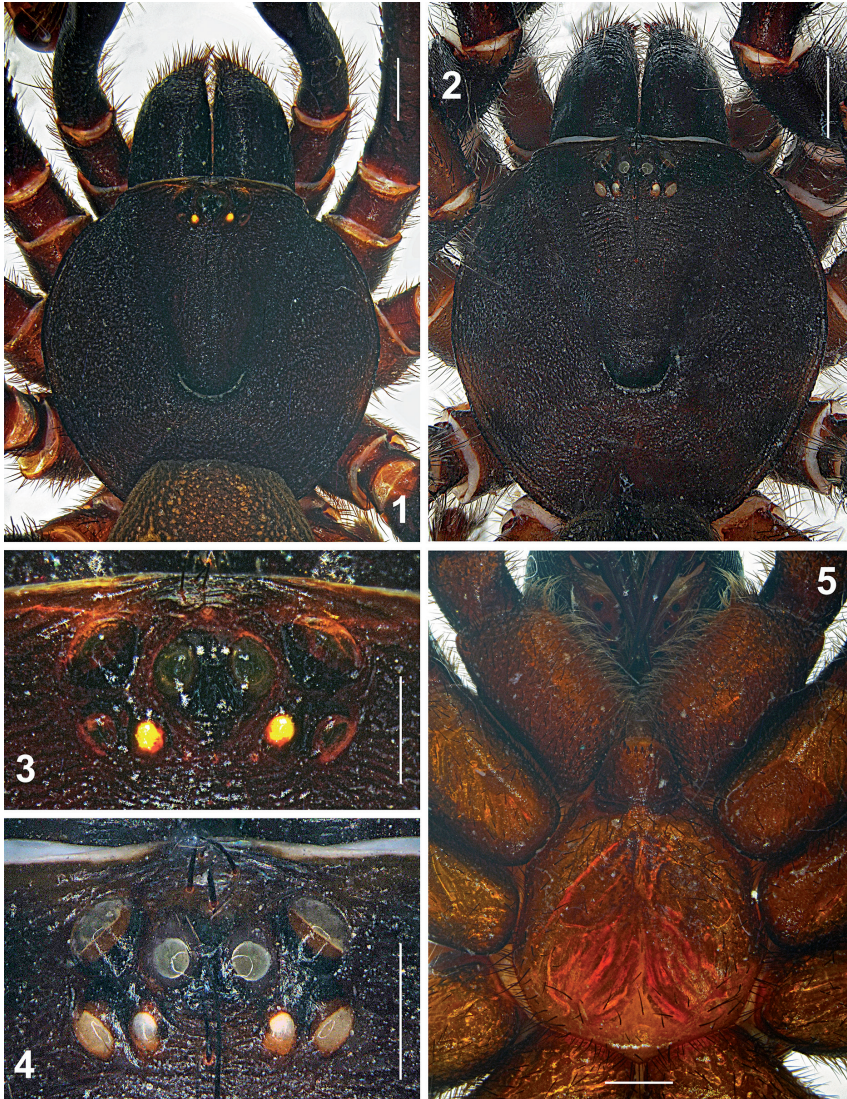
Genus *Ummidia* Thorell, 1875
Ummidia gandjinoi (Andreeva, 1968)

(Figs 1, 3, 5–8)

Pachylomerus gandjinoi Andreeva, 1968: 68, fig. 1 (♂), 1976: 13, figs 1–5 (♂).

Ummidia gandjinoi: Brignoli 1983: 117; Zonstein 2008: 151, figs 1–6 (♀).

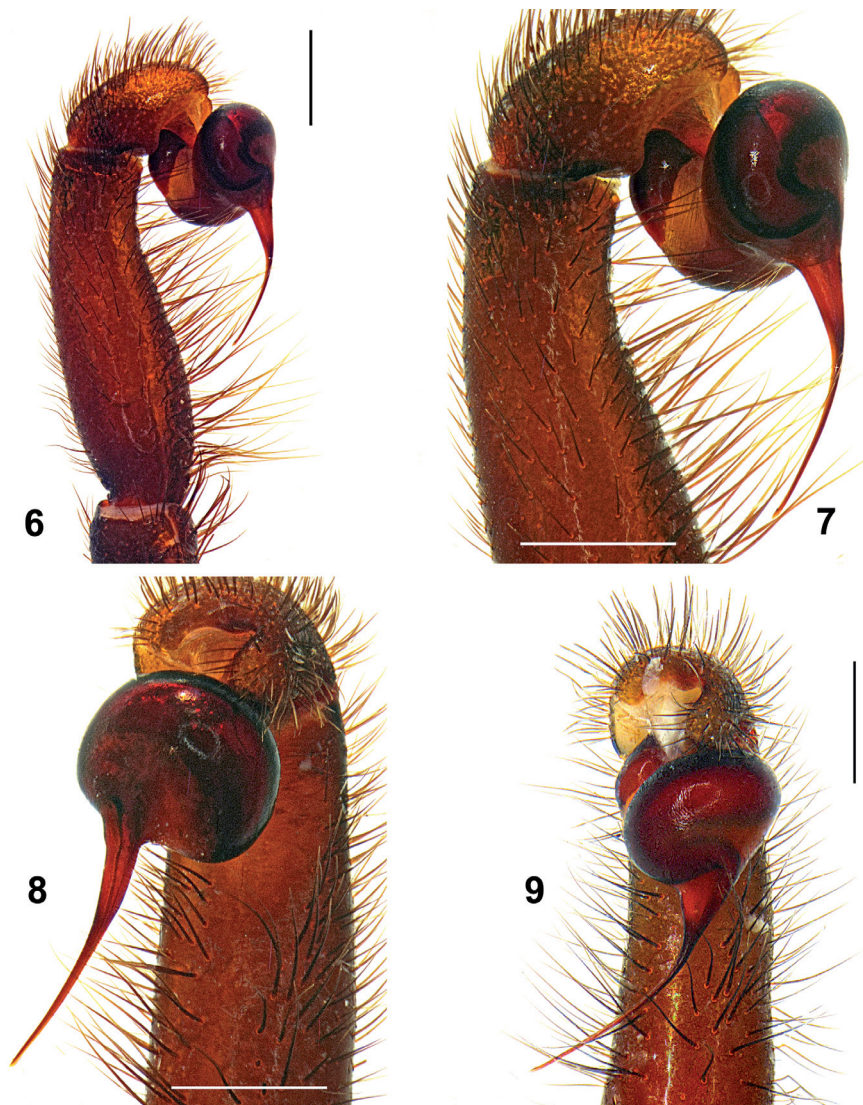
Diagnosis: *Ummidia gandjinoi* seems to be closely related to *U. mischi* Zonstein, 2014 (Figs 2, 4, 9) known from a small male series collected in South Afghanistan. However, it can be distinguished from the latter species by a noticeably wider carapace, narrowly spaced anterior median eyes, spinose patella IV and tarsi I–II, shorter palpal tibia, and details of the distal embolus.



Figs 1–5: *Ummidia* spp., male holotypes: (1, 3, 5) *U. gandjinoi* (Andreeva, 1968) and (2, 4) *U. mischi* Zonstein, 2014: (1, 2) prosoma, dorsal view; (3, 4) eye tubercle, dorsal; (5) prosoma, ventral. Scale bars for Figs 1, 2 and 5 = 1.0 mm, for Figs 3 and 4 = 0.5 mm.

Description: Male. Body length including chelicerae 16.00.

Color in alcohol: carapace and chelicerae very dark reddish brown, palps and legs reddish brown except lighter colored cymbium and tarsi I–II; sternum, labium and abdomen ventrally yellowish brown; abdomen dorsally brown with spotted light brown pattern; genital area, book-lungs and spinnerets brownish yellow.



Figs 6–9: *Ummidia* spp., male holotypes: (6–8) *U. gandjinoi* (Andreeva, 1968) and (9) *U. mischi* Zonstein, 2014: (6) distal segments of pedipalp, showing palpal organ, retrolateral; (7) palpal organ, retrolateral; (8, 9) same, ventral. Scale bars = 1.0 mm.

Prosoma dorsal and ventral views as in Figs 1, 5. Carapace 7.47 long, 7.34 wide. Eye tubercle as in Fig. 3. Eye diameters and interspaces: AME 0.21(0.29), ALE 0.48, PLE 0.28, PME 0.16, AME–AME 0.23(0.15), ALE–AME 0.20(0.16), ALE–PLE 0.22, PLE–PME 0.13, PME–PME 0.63. Cheliceral rastellum consists of about 30 cone thorns mostly on process. Cheliceral furrow with 4 or 5 promarginal and 5 retromarginal teeth each. Cheliceral fang in medial part gently serrate. Labium 1.09 long, 1.39 wide, with 7 medium and 3 small cone cuspules. Sternum 3.98 long, 3.95 wide. Sternal sigilla confluent. Each maxilla with *ca* 30 medium to small cone cuspules distributed from probasal heel to median part of maxilla.

Palp and leg structures. Spination: legs with numerous spines, thorn-like on patellae and tibiae. Leg I: femur p6; patella p9–10, r5–6; tibia p11–12, pv1–5, r0–1, rv13–15; metatarsus p2–3, r6; tarsus p2–3, r3. Leg II: patella d10a, p8–9, r0–1; tibia p7–9, pv2–4, r2–4, rv10; metatarsus p2a, r5, tarsus p2, r3. Leg III: patella d10a, p9–10, r2–3; tibia d7–9a, p2, v4–5a; metatarsus d7–8a, p3, v11–12; tarsus p10. Leg IV: patella p2–3, tibia p7–8, v10–11; metatarsus p2–3, v12–15; tarsus p15. Palp entirely and femora II–IV aspinose. Tarsi and metatarsi I–II with entire, short and dense scopula. Trichobothria: 2 rows of 6 or 7 each on tibiae; 9–12 on metatarsi; about 20 on tarsi (plus 1–3 clavate trichobothria on tarsi I–III); 14–15 (including 7 or 8 clavate trichobothria) on cymbium. Tarsal claws: paired claws I–IV with 1 large and acute proximal tooth (one claw on leg IV with bifid tooth), unpaired claw steeply curved, bare. Leg measurements (palp – legs I–II–III–IV):

Femur	4.99	6.25	5.54	4.68	6.20
Patella	2.14	2.81	2.79	2.46	2.66
Tibia	4.08	3.90	3.29	2.61	3.75
Metatarsus	—	3.12	3.08	3.05	4.42
Tarsus	1.57	1.68	1.92	1.90	2.74
Total	12.78	17.76	16.62	14.70	19.77

Copulatory organs. Palpal tibia, cymbium and palpal organ as in Fig. 6. Palpal organ asymmetrical with long and subapically hooked embolus (Figs 7, 8).

Spinnerets. PMS: length 0.63, diameter 0.28. PLS: max. diameter 1.11; length of basal, medial and apical segments 0.80, 0.47, 0.30 (total 1.57); apical segment domed.

Female. Described in detail by Zonstein (2008).

Holotype: ♂ **Tajikistan:** Aruktau Mts., Gandjina (37°58'N 68°32'E), 20.iv.1966, V. Mikhailov.

Distribution: Tajikistan (Andreeva 1976; Zonstein 2008).

REFERENCES

- ANDREEVA, E.M. 1968. Materials to the spider fauna of Tadzhikistan. III. Mygalomorphae. *Reports of the Academy of Sciences of the Tadjik SSR [Doklady AN Tadzhikskoi SSR]* **11** (7): 68–71. [in Russian]
- ANDREEVA, E.M. 1976. *Spiders of Tajikistan*. Donish, Dushanbe, 196 pp. [in Russian]
- BRIGNOLI, P.M. 1983. *A catalogue of the Araneae described between 1940 and 1981*. Manchester Univ. Press, Manchester, 755 pp.
- ZONSTEIN, S.L. 2008. Description of the female of the Central Asian trapdoor spider, *Ummidia gandjinoi* (Andreeva, 1968) (Aranei: Ctenizidae). *Arthropoda Selecta* **16**: 151–152.
http://kmljournals.com/upload/PDF/ArthropodaSelecta/23/23_3_269_271_Zonstein.pdf